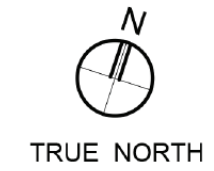


· 68 · EAST



· 68 · EAST



Building 1 & 2

10 Units

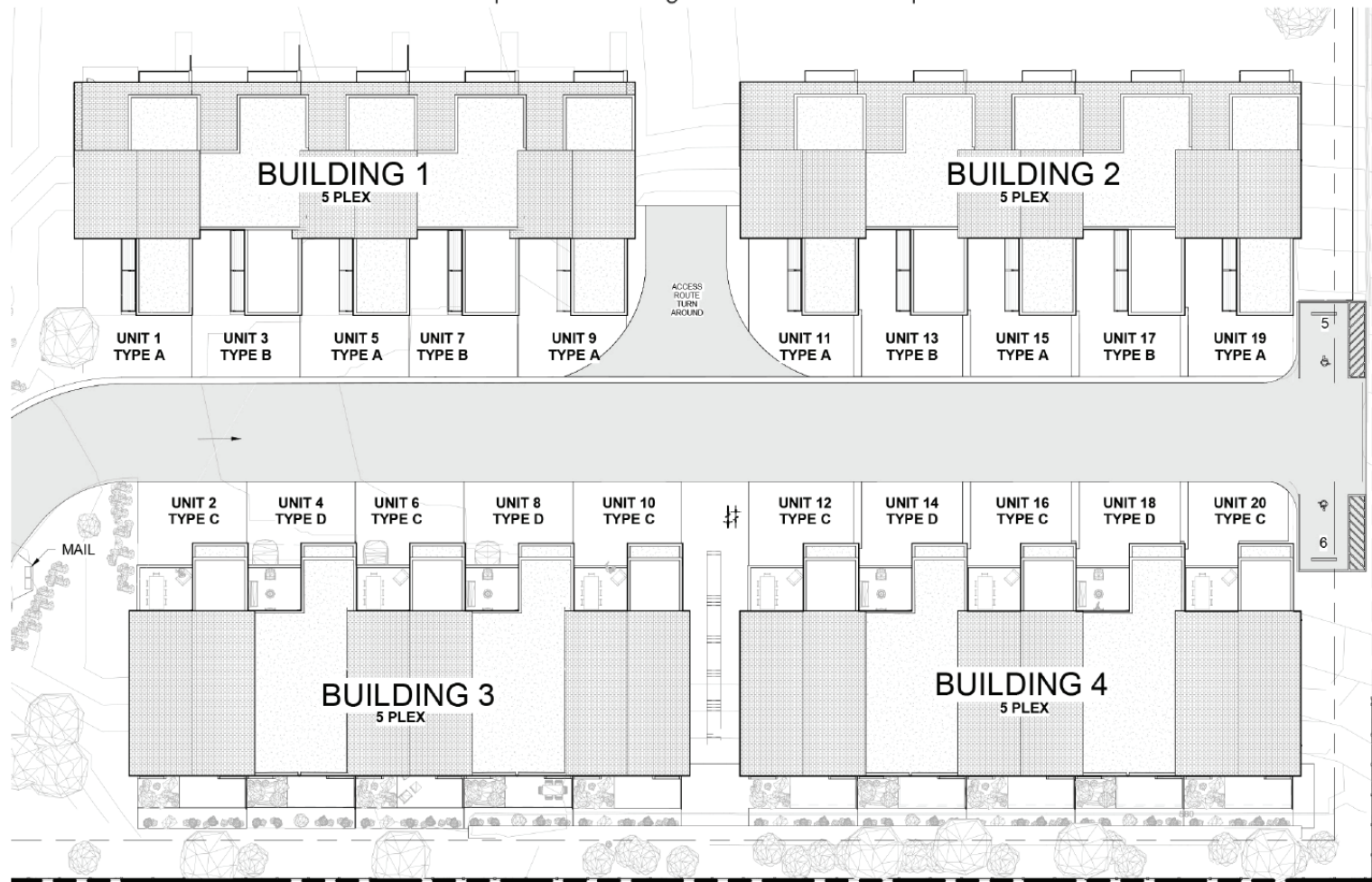
Parking: 2
Levels: 3
Floor Area: 2600 SF
Beds: 3

Building 3 & 4

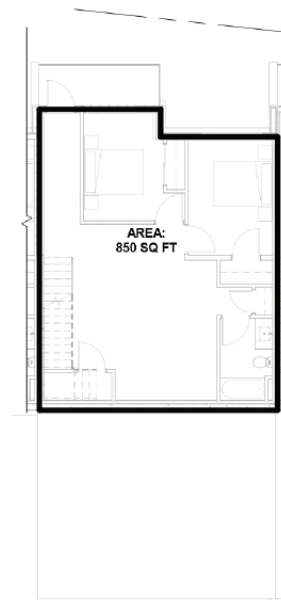
10 Units

Parking: 2
Levels: 2
Floor Area: 2180 SF
Beds: 3

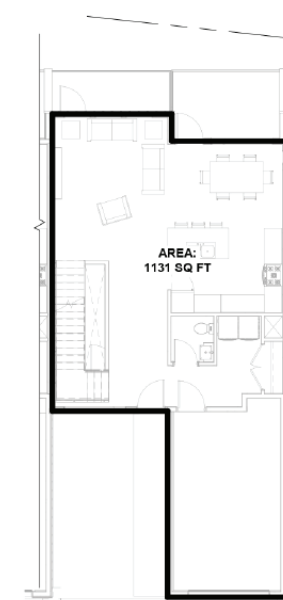
| Roof lines alternate between pitched and flat |
| 6 Visitor Parking stall Provided overall |



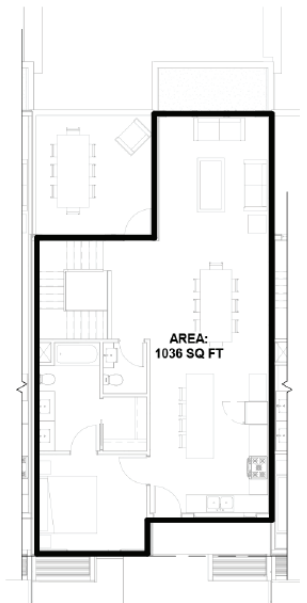
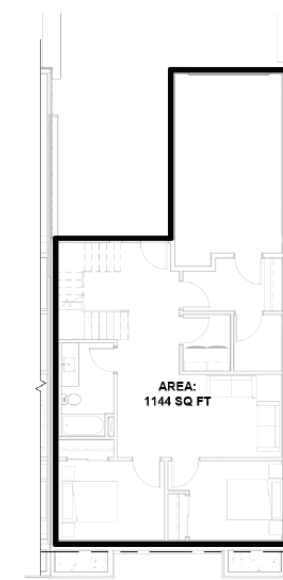
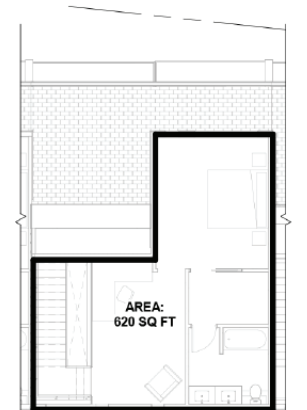
Basement*



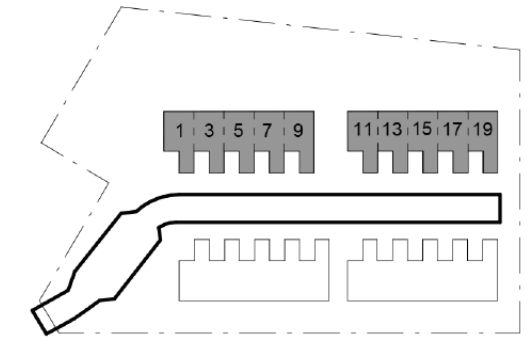
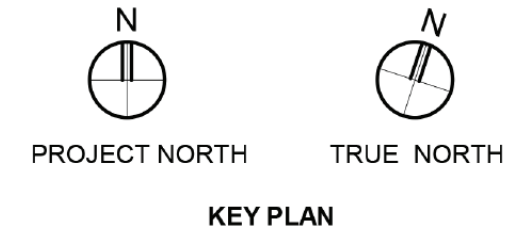
Street Level



Level 2



· 68 · EAST



North Unit

Total Livable Unit Area: 1629 SF

Living Area: 210 SF
Rec Room: 250 SF

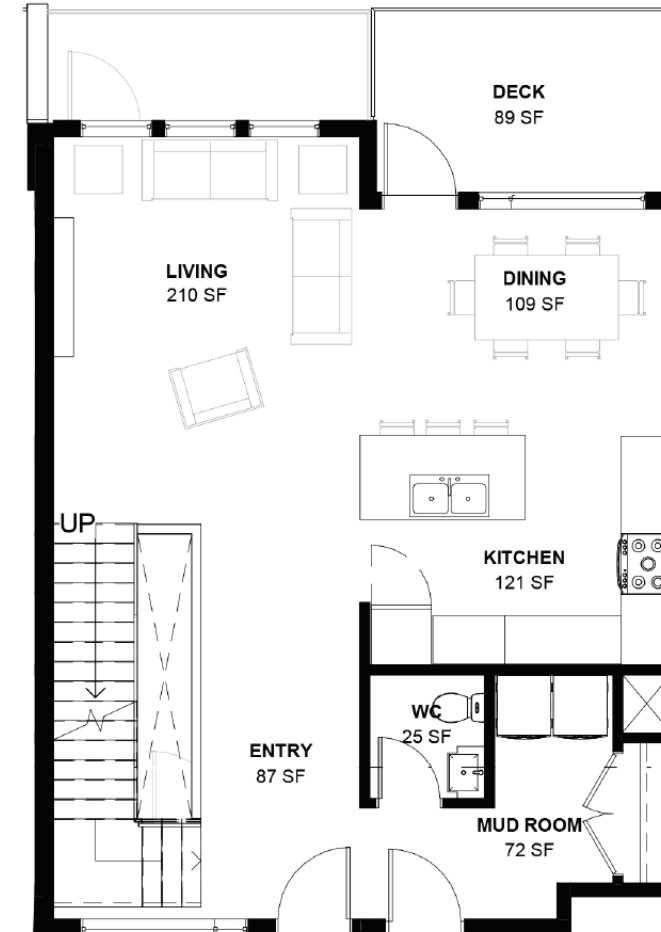
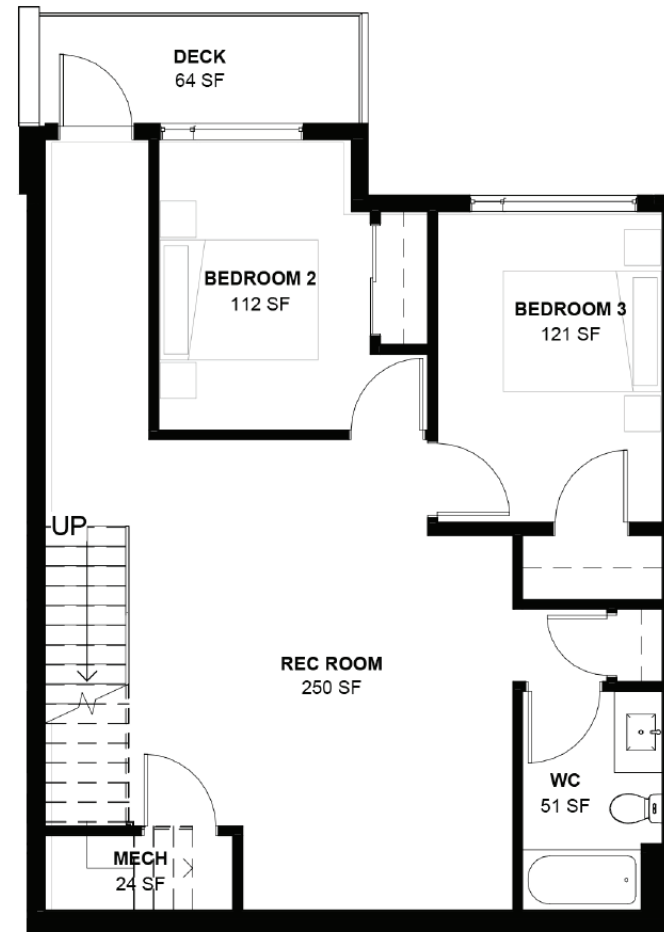
Main Balcony: 89 SF
Lower Balcony: 64 SF

Bathrooms: 2 Full, 1 Half

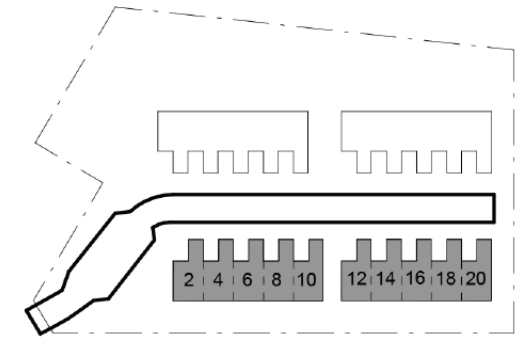
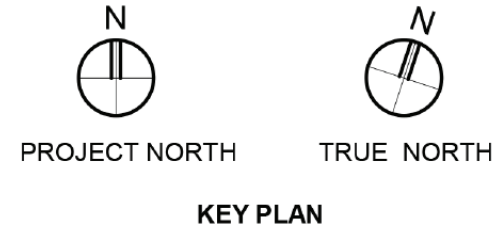
View Direction:
Mountains
Valley/River

Unit Numbers:

BLDG 1: 1, 3, 5, 7, 9
BLDG 2: 11, 13, 15, 17, 19



· 68 · EAST



North Unit

Total Unit Area: 1230 SF

Living Area: 162 SF
Rec Room: 176 SF

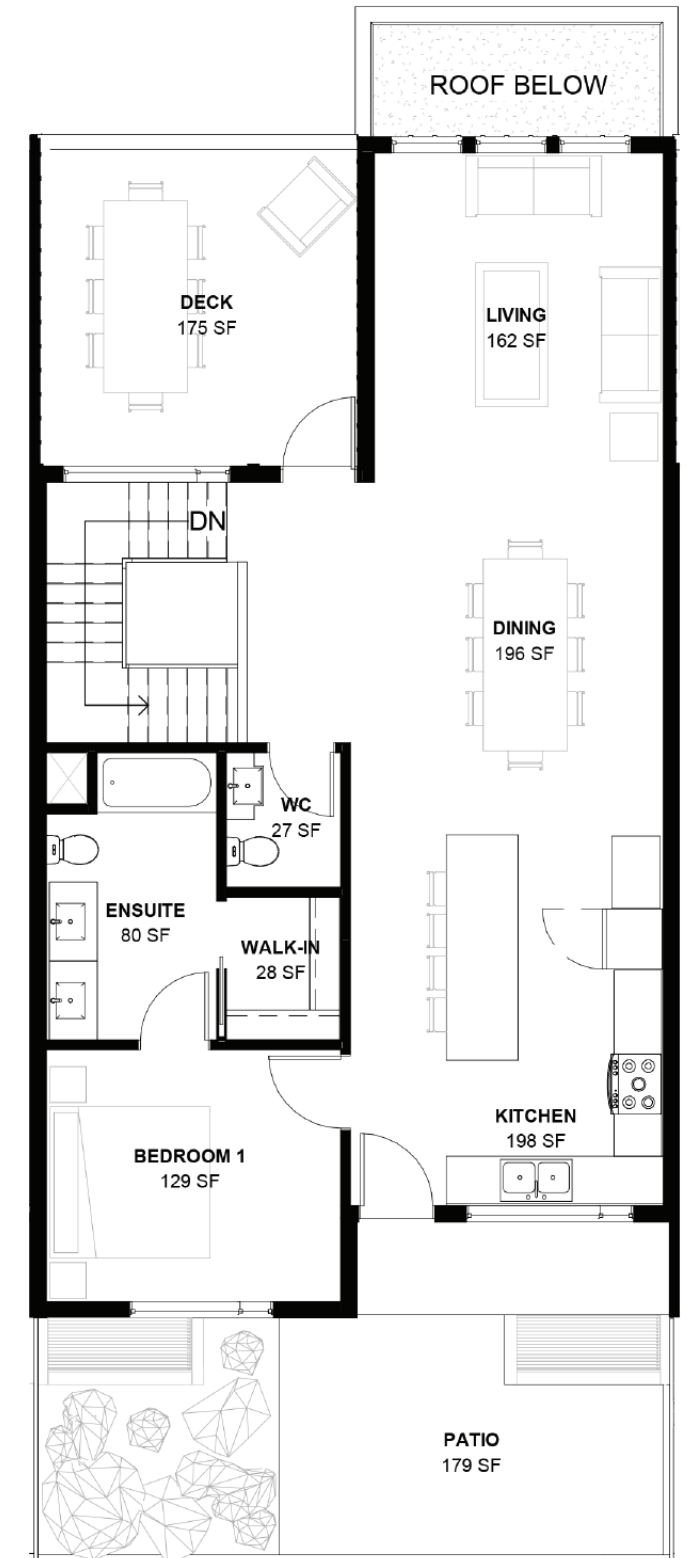
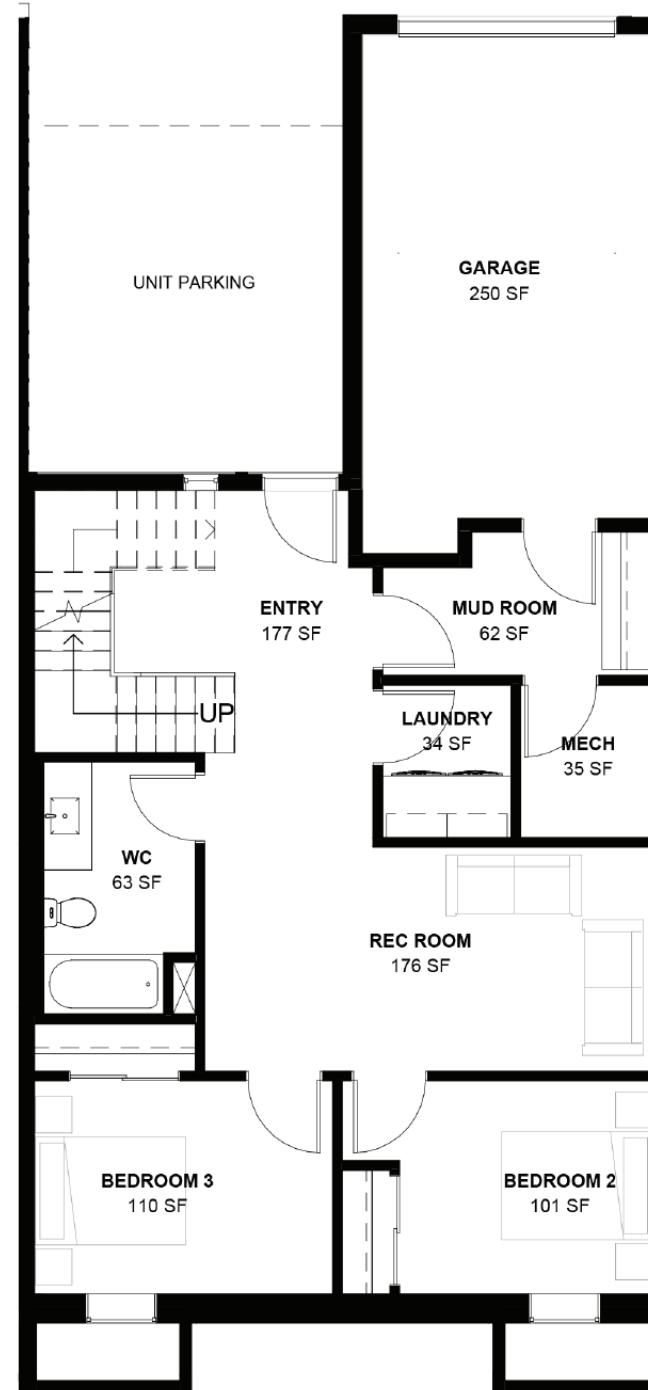
Deck: 175 SF
Patio: 180 SF

Bathrooms: 2 Full, 1 Half

View Direction:
Mountains
Semi Private Back Yard

Unit Numbers:

BLDG 1: 2, 4, 6, 8, 10
BLDG 2: 12, 14, 16, 18, 20



· 68 ·
EAST

