



JUNIPERWEST

BUILDERS

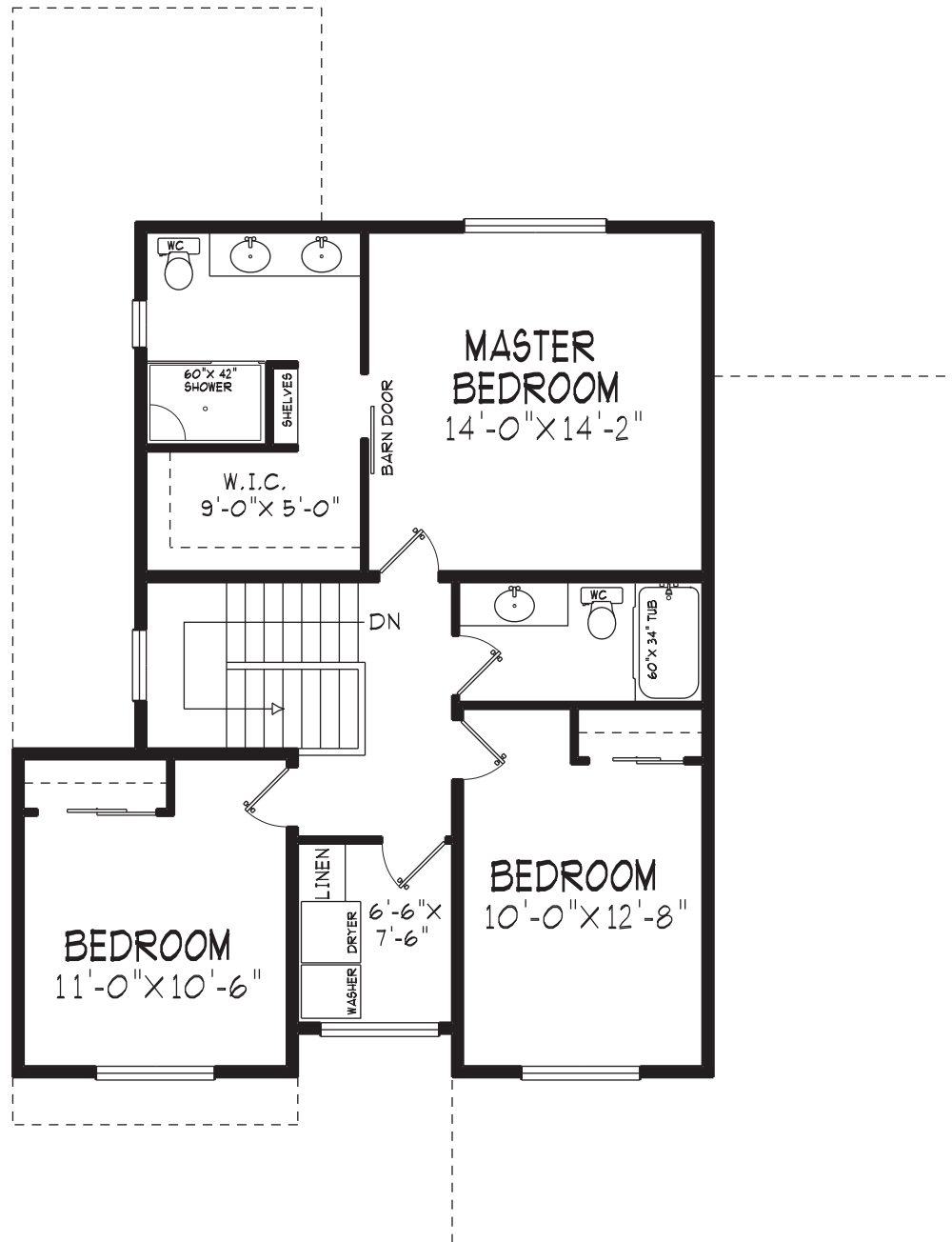
Two story homes available
with or without basement.

Zoned RS 1S and building options
available for suite-ready homes.



DESIGN A | TWO STOREY

Detailed construction drawings may vary slightly.



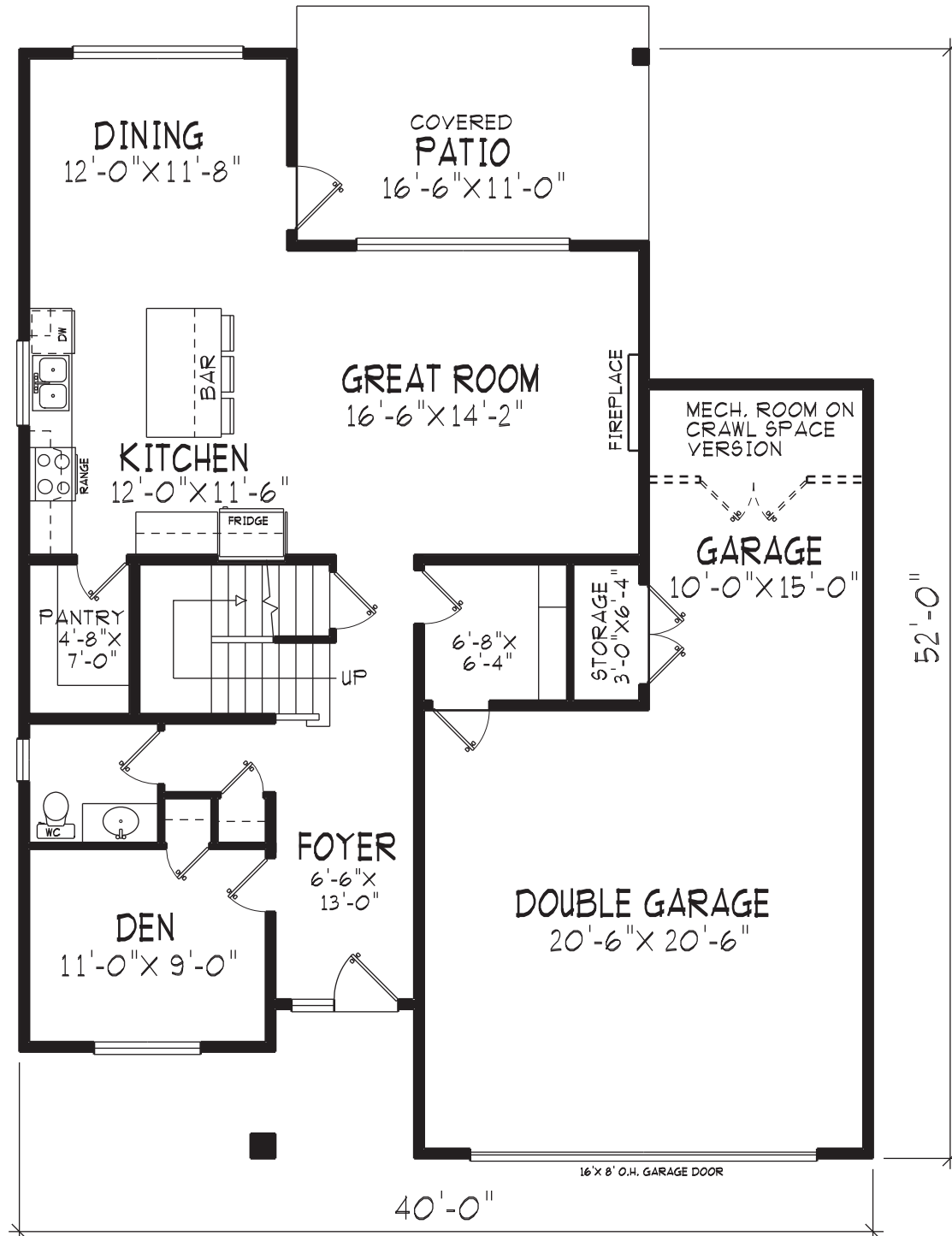
Upper Floor Plan

Finished floor area this level
870 SQ. FT.

Total finished floor area
without basement 1925 SQ. FT.

Total finished floor area with
basement 2980 SQ. FT.

DESIGN A | TWO STOREY



Main Floor Plan

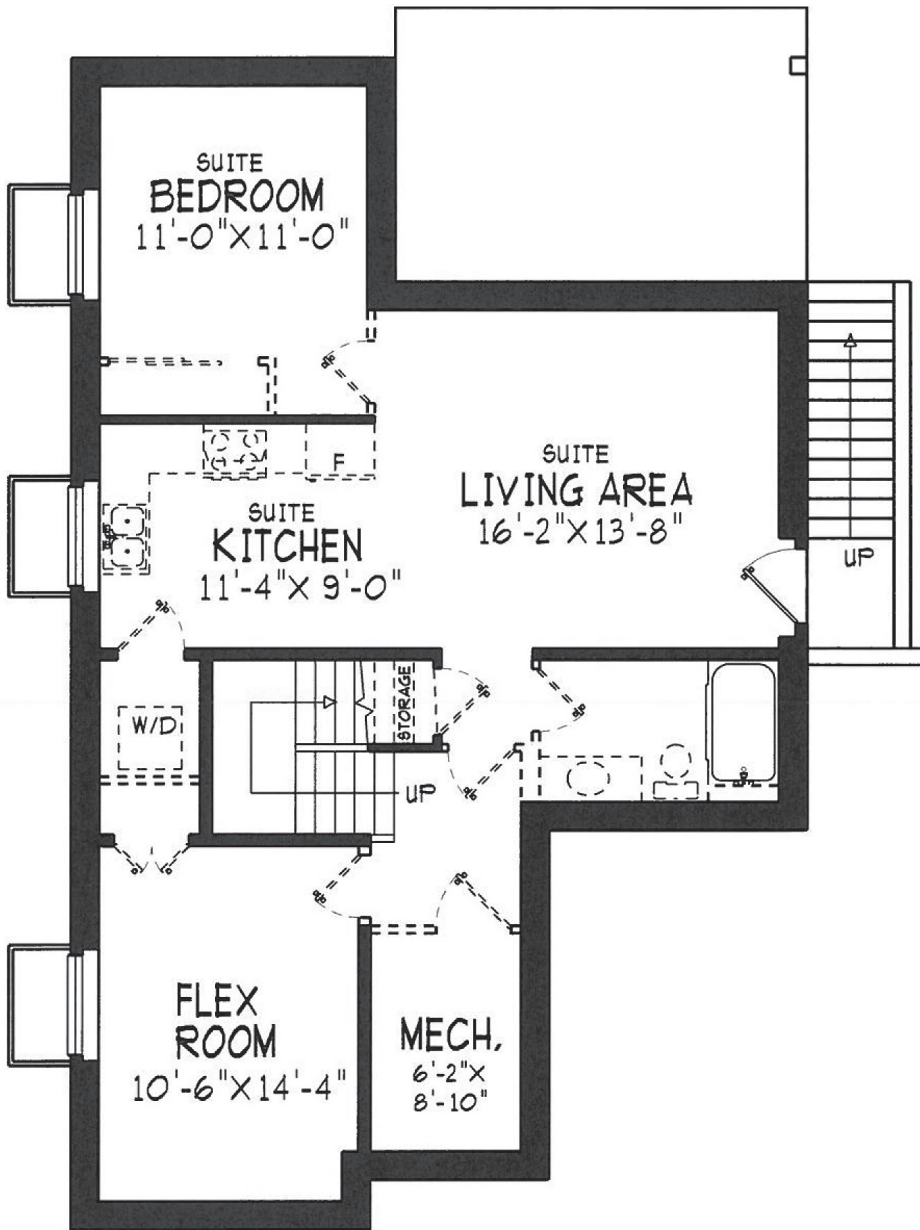
Finished floor area this level
1055 SQ. FT.

Total finished floor area
without basement 1925 SQ. FT.

Total finished floor area with
basement 2980 SQ. FT.

Garage Area 608 SQ. FT.

DESIGN A | TWO STOREY



Lower Floor Plan

Total floor area with
finished basement
2980 SQ. FT.

Suite area
685 SQ. FT.

Owner's area
370 SQ. FT.

**DESIGN A | TWO STOREY
WITH BASEMENT**