



JUNIPERWEST

BUILDERS

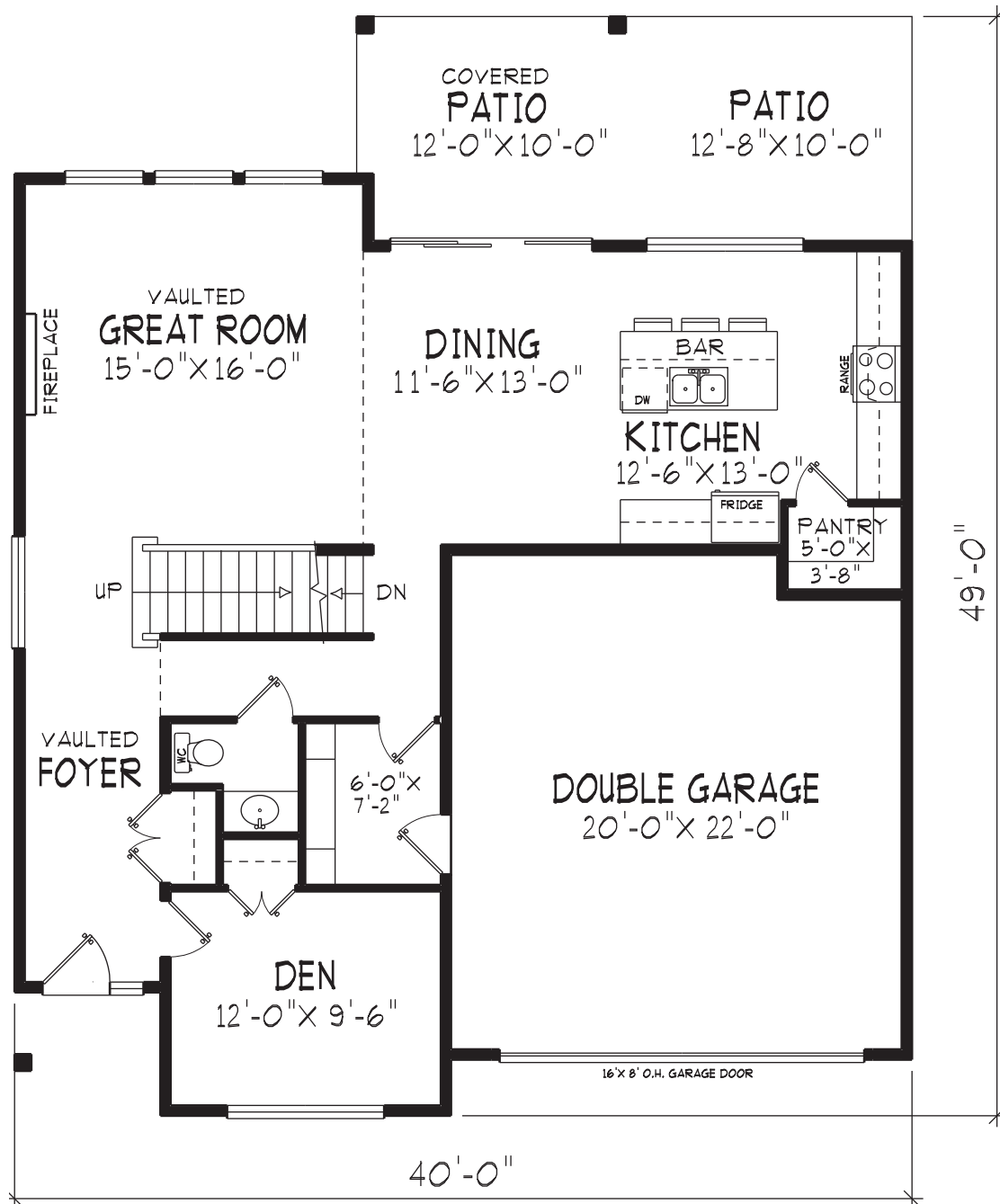
Two story homes available
with or without basement.

Zoned RS 1S and building options
available for suite-ready homes.



DESIGN B | TWO STOREY

Detailed construction drawings may vary slightly.



Main Floor Plan

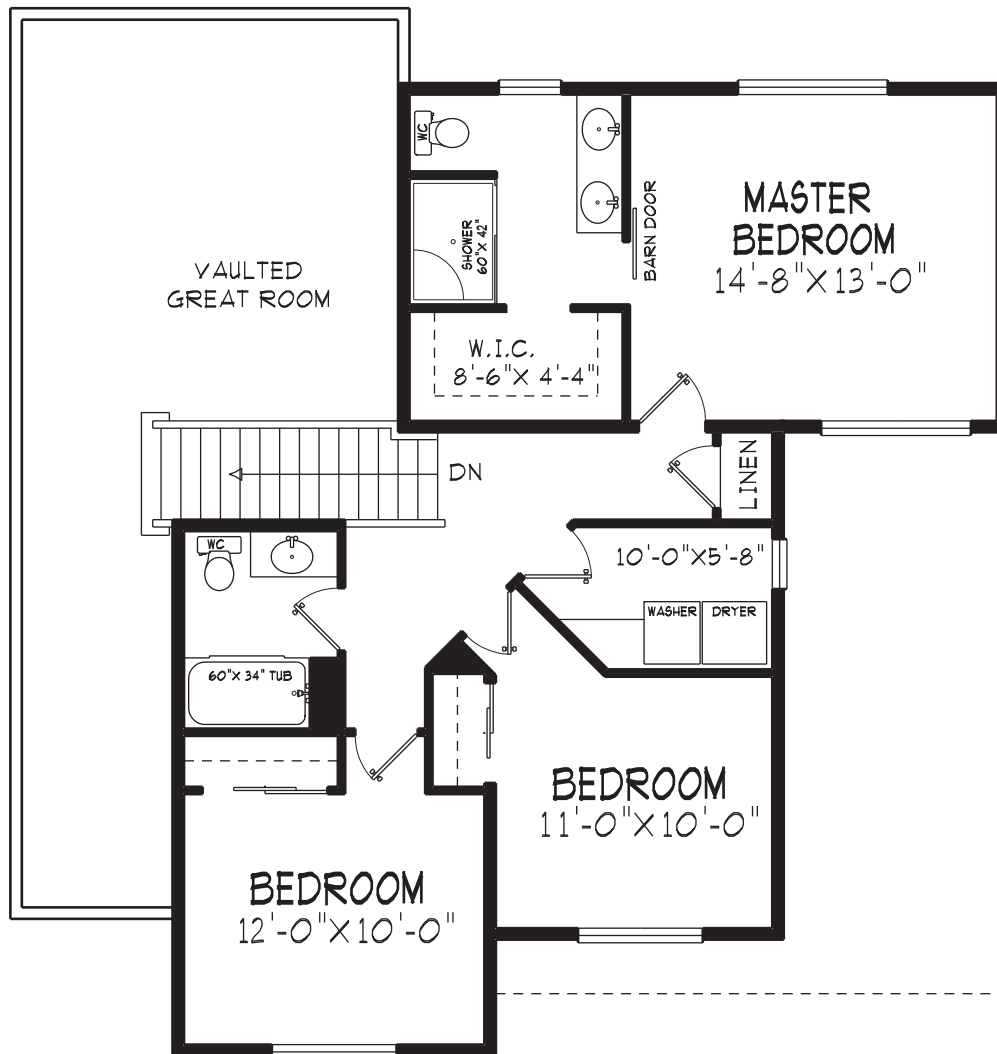
Finished floor area this level
1077 SQ. FT.

Total finished floor area without
basement 1940 SQ. FT.

Total finished floor area with
basement 3012 SQ. FT.

Garage area
450 SQ. FT.

DESIGN B | TWO STOREY



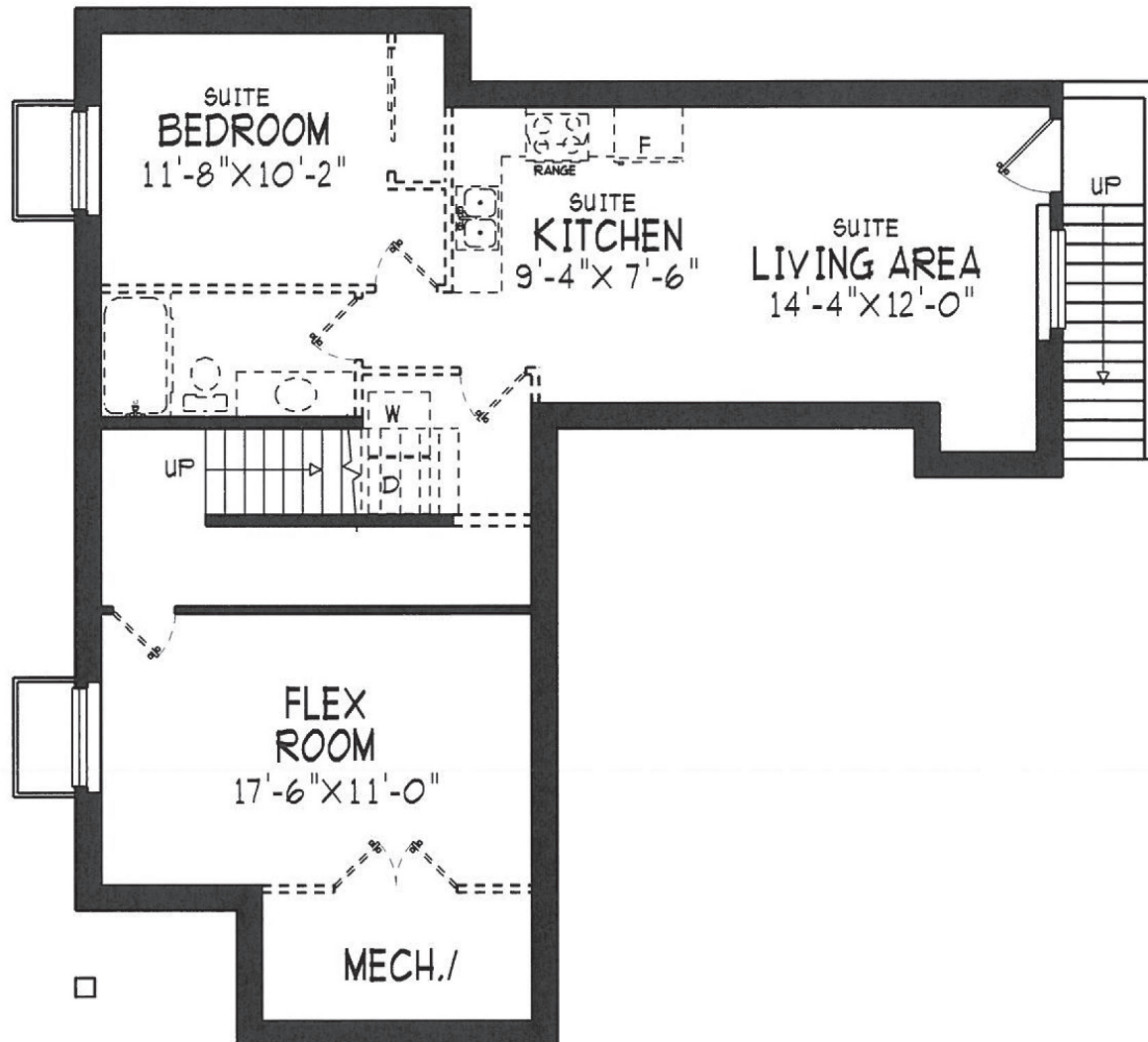
Upper Floor Plan

Finished floor area this level
863 SQ. FT.

Total finished floor area without
basement 1940 SQ. FT.

Total finished floor area with
basement 3012 SQ. FT.

DESIGN B | TWO STOREY



Lower Floor Plan

Total floor area with
finished basement
3012 SQ. FT.

Suite area
642 SQ. FT.

Owner's area
430 SQ. FT.

DESIGN B | TWO STOREY
WITH BASEMENT